



DEVELOPMENT DU JOUR

Morris Adjmi's Brick-Faced Brooklyn Condos Debut From \$795K

Tuesday, September 29, 2015, by [Amy Platt](#)



Architect **Morris Adjmi** is known for combining **modern** design elements with more traditional structures—see [837 Washington Street](#), with its peaked glass topper perched on a historic Meatpacking District building, or the **old/new** mix at Williamsburg's [Wythe Hotel](#)—so it's no surprise that his Boerum Hill condos at **465 Pacific Street** would follow a similar formula. The **30-unit** building, which recently launched sales, echoes its surroundings with a **brick** exterior, while the metal upper levels "pay homage to the historical **ironworkers' neighborhood**" (according to the architect, anyway). The renderings show open, **airy** units with large windows (some of which are **double-height**, depending on the apartment). There are also several "**terrace duplexes**" with private outdoor space, along

with three penthouse units. Right now, there are [six units](#) available, ranging from a two-bedroom for **\$1.2 million** to a three-bedroom with a private terrace for **\$2.4 million**.

















NO. 465
PACIFIC
 BOERUM
 HILL

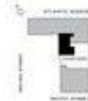


Garden 2D

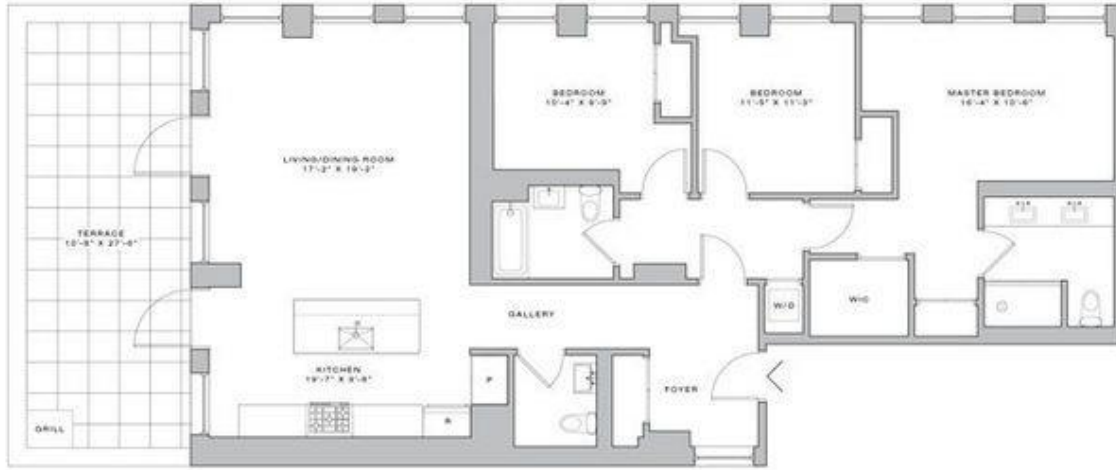
1,286 Sf
 195 Ext Sf
 2 Bedrooms
 2 Bathrooms

718.246.4650 465PACIFIC.COM

Equal Housing Opportunity. All dimensions and square footages are approximate and subject to construction variances and may vary from floor to floor. Buyer assumes the right to make changes or amendments with the offering plan. The complete offering terms are in an offering use available from the Sponsor. PM for CD04-0113
 Sponsor: Atlantic Pacific Development Partners LLC, 115 Borey Hall Road, New York, NY 10019



NO. 465
PACIFIC
 BOERUM
 HILL



5A
 1,613 SF
 353 Ext SF
 3 Bedrooms
 2 Bathrooms
 1 Powder Room

716.246.4650 465PACIFIC.COM

Equal Housing Opportunity. All dimensions and square footages are approximate and subject to construction variances and may vary from floor to floor. Buyer assumes the right to make changes in accordance with the offering plan. The complete offering terms set in an offering plan available from the Sponsor. Plan for 12/16/17. Sponsor: Atlantic Pacific Development Partners LLC, 115 Broad Street, New York, NY 10038. © 2017 Atlantic Pacific Development Partners LLC.

